

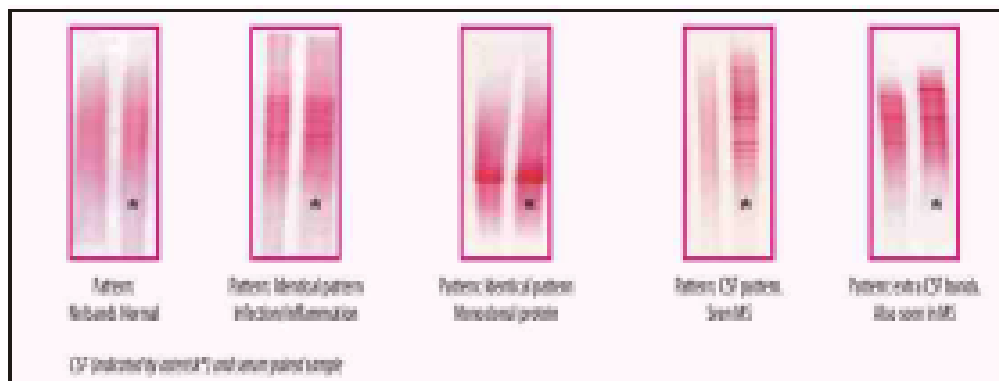
Multiple Sclerosis

Early diagnosis & early treatment are critical to prevent irreversible long-term sequelae in patients with Multiple Sclerosis

Multiple Sclerosis Profile @ Metropolis :

OCB (Oligoclonal Band)

- A gold standard technique for diagnosis of Multiple Sclerosis
- Useful in patients with equivocal clinical presentation and radiological findings
- A finding of 2 or more cerebrospinal fluid (CSF) – specific bands is consistent with Multiple Sclerosis
- The number of bands in the oligoclonal patterns does not correlate with disease severity or prognosis



Multiple Sclerosis

CSF IgG Index

- Abnormal CSF IgG indexes and OCB patterns have been reported in 70-80% of Multiple Sclerosis patients
- The use of CSF index plus OCB has been reported to increase the sensitivity to over 90%
- The index is independent of the activity of the demyelinating process

Anti-MAG (Myelin Associated Glycoprotein)

- Detection of IgM autoantibody against myelin associated glycoprotein (MAG) suggestive of multiple sclerosis.
- The possibility of MAG antibody involvement in a suspected neuropathy may essentially be ruled out if a MAG IgM negative result is obtained

Oligoclonal Band & CSF IgG Index
Sample Requirement : 2 ml of CSF and 2 ml of serum for confirmation
Test Schedule : Tue, Fri : 9 am
Reported on : Next day 5th day